

Roller Replacement shaft kit (526494)

Removal of shaft from roller.

Apply localized heat to the assembly to approximately 400° F (250° C). And disassemble while hot.

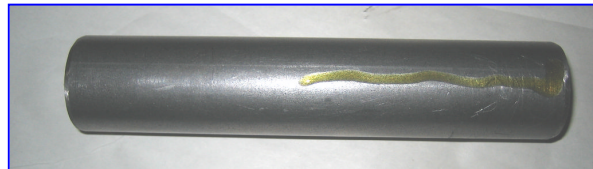
Installation of shaft in roller.

Clean the tube (524153) and the shaft (526229) with a rag to remove any oil or debris that could cause a problem installing the shaft. After the tube and the shaft has been cleaned use the Loctite 641 (308703) supplied in the kit, and place one 1/16" bead of loctite half way down the shaft and one 1/16" bead 180 degrees from it (see fig. 2-3). Turn the shaft while inserting into the tube, to cover the shaft completely in loctite. Insert shaft until the shaft bottoms out. When the shaft has bottomed out the exposed shaft should be 1 7/8" long. The Loctite will take 24 hours to fully cure.



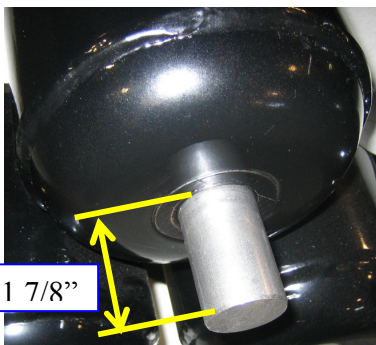
(Fig. 1-3)

Clean tube and shaft with a shop rag to get rid of any oil or debris.



(Fig. 2-3)

(1/16" bead of loctite)



(Fig. 3-3)

Exposed shaft should measure 1 7/8"